

Name: Key Date: _____

1. In the following questions:

- Describe the set in words,
- Write down two more elements in the set.

- a) {Asia, Africa, Europe, ...} *North America, South America*
 b) {2, 4, 6, 8, ...} *10, 12*
 c) {Sunday, Monday, Tuesday, ...} *wednesday, Thursday*
 d) {1, 4, 9, 16, ...} *25, 36*

2. Set A = {whole numbers between 60 and 90}

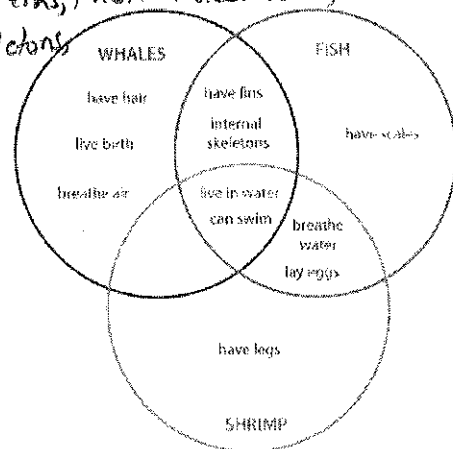
- a) List the subset B {multiples of 5} *{60, 65, 70, 75, 80, 85, 90}*
 b) List the subset C {multiples of 3} *{60, 63, 66, 69, 72, 75, 78, 81, 84, 87, 90}*
 c) List the subset D {perfect squares} *{64, 81}*
 d) List the elements that are in both subsets B and C. *{60, 75, 90}*

3. State whether each of the following statements is true or false.

- a) {Algeria, Mozambique} \subset {Countries in Africa} *Yes*
 b) {mango, banana} \subset {fruit} *Yes*
 c) {volleyball, basketball, football, golf} \subset {team sports} *No*
 d) {potatoes, ~~carrots~~} \subset {vegetables} *Yes*

4. List the elements of each subset of characteristics for sea creatures.

- a) Subset W = *{have hair, live birth, breathe air, have fins, internal skeletons, live in water, can swim}*
 b) Subset F = *{have scales, breathe water, lay eggs, fins, skeletons, live in water, can swim}*
 c) Subset S = *{have legs, breathe water, lay eggs, live in water, can swim}*
 d) What elements are in subsets F and S?
{live in water, can swim, breathe water, lay eggs}
 e) What elements are common to all 3 subsets?
{live in water, can swim}



5. List the elements of each subset of animals

a) Subset {Can Swim} = *Human, turtles, fish, sharks, whales, jellyfish, ducks, shrimp, dogs*

b) Subset {Have Fins} = *{fish, sharks, whales}*

c) Subset {Breath Air} = *{turtles, humans, ducks, dogs, whales, chimps, spiders, chickadees}*

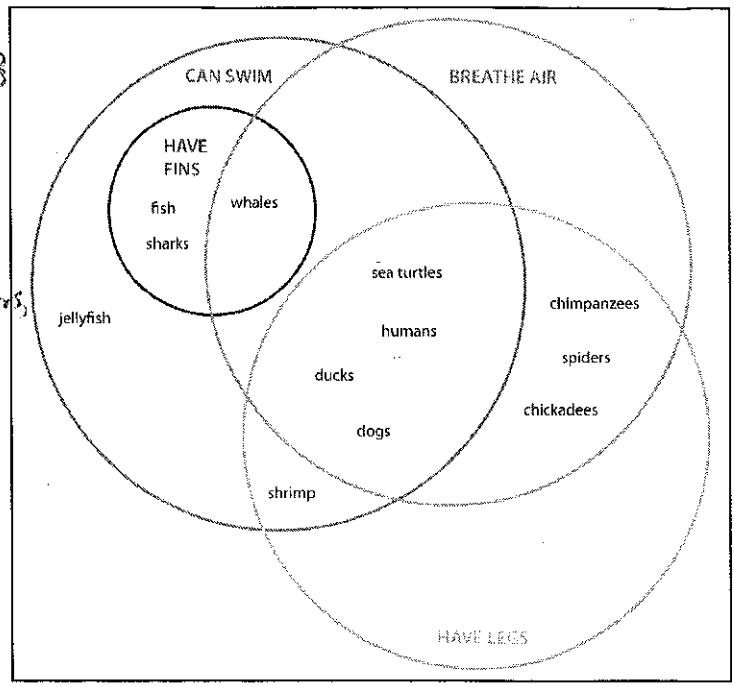
d) Is {can swim} \subset {have fins}? *No*

e) Is {have fins} \subset {can swim}? *Yes*

f) Is {have fins} \subset {breath air}? *No*

g) What ~~animals~~ ^{elements} are in both {can swim} and {breath air}? *{whales, turtles, humans, ducks, dogs}*

h) ~~What animals~~ ^{How many elements} are in {can swim} or {breath air}? *12*



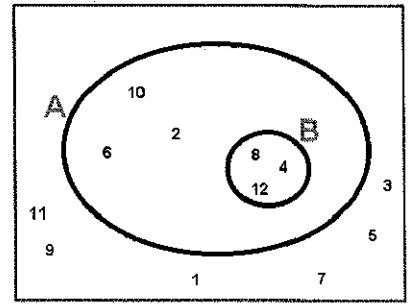
6. The whole numbers from 1 to 12 are included in the Venn diagram below.

a) List the elements of subset {A} *{2, 4, 6, 8, 10, 12}*

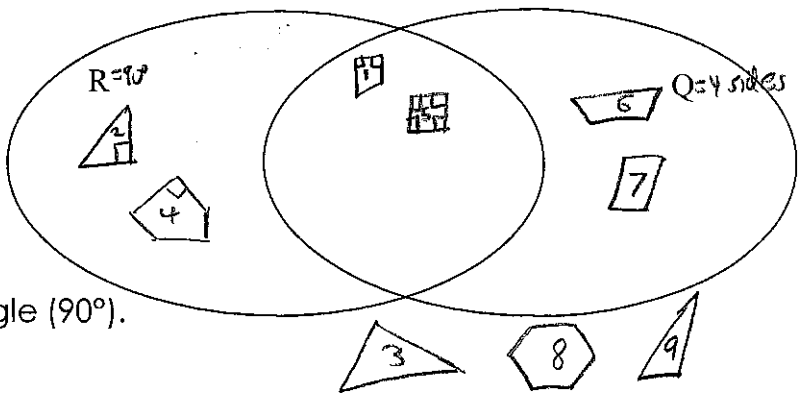
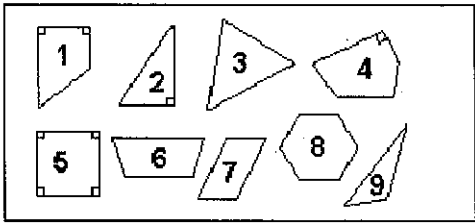
b) List the elements of subset {B} *{4, 8, 12}*

c) Is {A} \subset {B}? *No*

d) Is {B} \subset {A}? *Yes*



7. Complete the Venn diagram using the below information.



Set R contains shapes with a right angle (90°).
Set Q contains shapes with four sides.